

BOARD OF DIRECTORS

- Mark Blackburn
- Eileen Dray-Bardon
- Jason Crank
- Mark McTrusty
- Fritz Nelson
- Karen Tice
- Nancy Tompkins

EXECUTIVE DIRECTOR

Chaney Nezbeth

LOCATIONS

- 769 Springfield Rd.,
Columbiana OH 44408
330-482-5072
- 125 W Fifth St.,
East Liverpool OH 43920
330-932-0353
- 109 W Rebecca St.,
East Palestine OH 44413
330-888-9814



In recognition of Developmental Disabilities awareness month, we would like to thank all of the students from the following districts who volunteer with us at all three of our locations.

- Columbiana County ESC
- Mahoning County ESC
- Robert Bycroft School
- Beaver County Rehabilitation Center

Serving Our Community: Facing Funding Challenges

We want to keep you informed about recent federal funding changes and how they may affect our ability to serve our community. As you know, we rely on a blend of private donations, state and local grants and the proceeds from our retail locations to fulfill our mission.

Recently, key federal programs supporting organizations like ours have faced budget cuts or elimination. While we are not currently affected by these changes, we are aware of how these changes could impact several areas in the future:

- **Reduced Service Delivery:** These grants fund essential operational costs. With less funding, we may have to scale back vital services, impacting the number of people we reach. Specifically, our GLOW and PTI programs are funded through The Ohio Department of Job & Family Services and could be disrupted.
- **Limited Program Expansion:** We strive to meet growing community needs. Funding loss hinders new initiatives and expansion of successful programs.
- **Increased Reliance on Donations:** Federal cuts necessitate greater reliance on your generous donations. We're committed to maintaining service quality, but your support is crucial.
- **Potential for Increased Need:** We are experiencing a significant increase in need in our food pantries. With the possibility of funding cuts to SNAP benefits or other nutrition programs we will be impacted.

We're actively seeking alternative funding and implementing cost-saving measures. But, your continued support and prayers are important now more than ever. Every donation helps us maintain vital services and continue serving those in need.

Thank you for your unwavering commitment to our mission to reflect the love of Jesus by serving as a community resource for families and individuals in need.

COMMUNITY HEALTH WORKERS

We offer a program that connects individuals with trained Community Health Workers (CHWs). These CHWs can partner with Medicaid eligible clients who are dealing with a chronic illness or pregnancy. CHWs provide coaching to help clients manage their health.

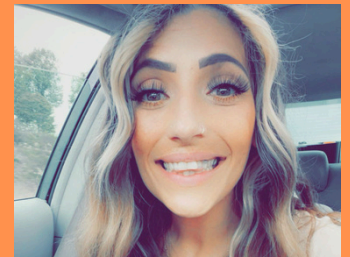
To learn more or connect with a CHW, call us at 330-482-5072.

Cynthia Davis



Cynthia is from New Waterford and will be working with clients in the Southern portion of Columbiana County.

Morgan Parker



Morgan is from East Palestine and will be working primarily in the Northern portion of Columbiana County.

Jacob Ruckdeschel



Jacob is from East Palestine and will be working in the Central area of Columbiana County.