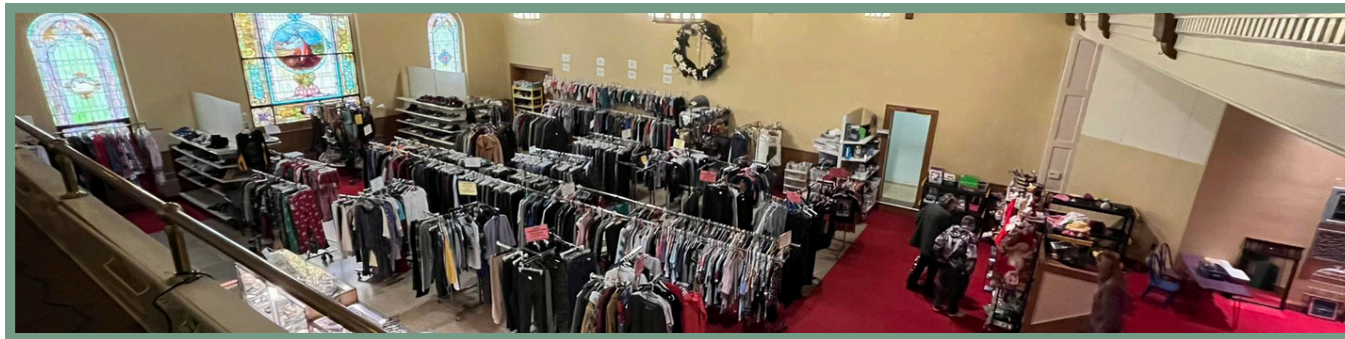


Spring 2026

THE WAY STATION



Continued Growth

We finalized the purchase of our building in East Palestine and did a **grand re-opening** on December 1, 2025. Our entire team is excited for the possibilities of the space as well as the **many partners** and community groups who will be using our building. The former owners, **First United Presbyterian Church** are still conducting worship service in their newly renovated Chapel upstairs each Sunday at 11:00 am. We continue to host NA and AA and have partnered with **EPGO** a nonprofit dedicated to the overall health of the aging population of East Palestine with a **"Winter Walkers"** program. Please follow us on Facebook for the most up to date information about this location and our Columbiana and East Liverpool locations.

Tenants in our EP Location

The **East Palestine Train Derailment Health Research Program** celebrated the grand opening of its new office inside the East Palestine Way Station. The event, marking the third anniversary of the 2023 disaster, featured officials from the NIH, the Ohio Department of Health, Way Station Board members and researchers from the Universities of Kentucky, Pittsburgh and Yale.

The office serves as a hub for a five-year, \$10 million federal initiative designed to provide residents with "gold-standard science" regarding the long-term health effects of the derailment.

Led by the University of Kentucky's **Dr. Erin Haynes**, the research team is currently:

Enrolling participants: Residents of EP and the surrounding communities (including those without symptoms) and first responders are encouraged to join.

Conducting medical studies: Testing liver and thyroid function.

Monitoring environment: Analyzing ongoing impacts on local water quality.

New Board Members

Misti Allison is a public health advocate and community leader dedicated to advancing environmental health, disaster response, and long-term recovery efforts. Following her lived experience during the East Palestine train derailment, she has worked to elevate community voices, support health research initiatives, and build partnerships that promote transparency and resilience. Misti brings a strong commitment to service, collaboration, and community well-being to her role on The Way Station Board.

Misti Allison



Jeff is a licensed Social Worker with Sharon Regional Hospital. He is also a Pastor with Faith United Methodist church working in the East Palestine and Negley areas. He has a passion for youth ministry and is an alumni of both Camp Asbury and Camp Wanake. Jeff says he loves this area and is proud of our local communities and what we are ... hard working and good people!

Pastor Jeff Pellin



Pictured cutting the ribbon are Dr. Kyle Walsh, NIEHS with Chaney Nezbeth, TWS CEO along with community members, TWS Board members, EP Chamber of Commerce, EP City Officials and multiple university researchers.

